



Laboratory Container Mixer Lab CM

Ideal for Product Development and Quality Control

HIGHLY FLEXIBLE



All Advantages at a Glance

- Flexible mixing with 6 or 12 liter containers
- Various tool and motor combinations
- Scale-up from laboratory to production possible
- Low energy consumption
- Easy and fast cleaning
- Mixing of small lab scale batches
- Intuitive operation in manual or automatic mode
- Despite its compact size, it has all the advantages of a large container mixer

Technical Data

Lab CM	Usable Volume	Batch Size	Mixing Time
	liters	kg	min. / Batch
LAB CM 6	4.8	2.4	3-6
LAB CM 12	9.6	4.8	3-6

The data shown in the tables are indicative and must be confirmed by MIXACO.

Perfect for Every Laboratory

- No product contamination due to closed mixing chamber
- Realistic simulation of production results
- Variant as Laboratory Heating Mixer available
- Individual configuration of mixing tools
- Ideal for product development, research, quality assurance and small-scale production in all industries

Custom Solutions

Additional sizes and execution available on request.

Parameters

Bulk Density: 0.5 kg/l

Filling Level: 55-80 %

Functionality

Lab Container Mixer

Vortex Principle in Minature

The MIXACO Laboratory Container Mixer Lab CM works just like a large container mixer. However, in the case of the Laboratory Container Mixer, the mixing container is only up to 12 liters in size and can be replaced quite easily by hand. Our Laboratory Container Mixer Lab CM is a powerful and versatile mixer for shortening the path from product development to production readiness or for testing new

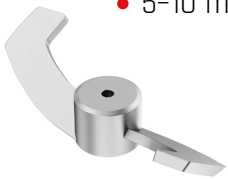
formulations. The container is fixed to the mixing head and turned upside down by 180° for the mixing process. The mixing material is transported upwards by the mixing tools in the container and sinks back down again by gravity. The result is perfect mixing without dead spaces.

Tools

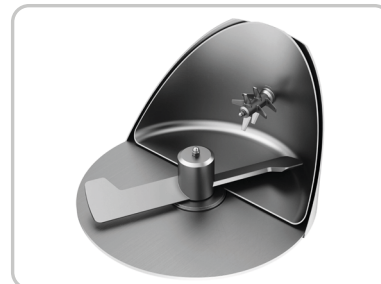
Masterbatch Tool
Color concentrates, masterbatch, toner, powder coating premixes
• 15-20 m/s



Bottom Blade Tool
Powder coating premixes, granules with granules, powder with powder, granules with powder
• 5-10 m/s



High Speed Mixing Tool
PVC, masterbatch and SPC
• 20-40 m/s

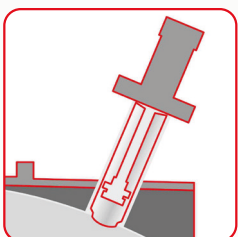


Color Dispersion Tool
Mixing temperature-sensitive materials, such as PTFE premixes
• Mixing Tool: 5-10 m/s
• Chopper: ca. 40 m/s

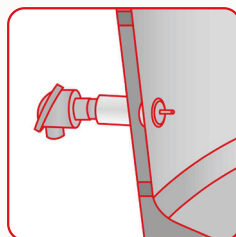


Color Concentrate Tool
Color concentrates, masterbatch
• Mixing Tool: 5-10 m/s

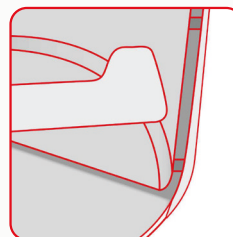
Options



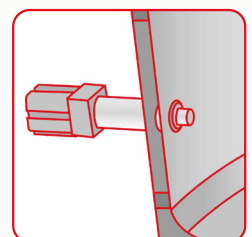
Dedusting



Temperature Sensor



Mixing Head Cooling



Injection