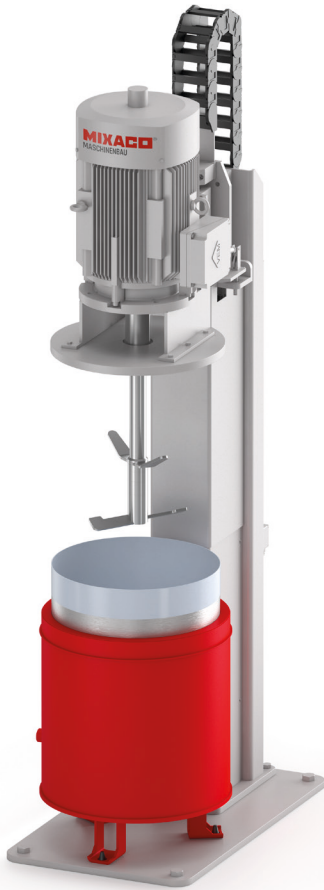


## Sack and Drum Mixer Speedy™

A Flexible Mixing System for Small Batches

NO REFILLING | HIGH FLEXIBILITY | FAST CLEANING



Speedy™ S/D



Speedy™ D MT

### All Advantages at a Glance

- Easy handling
- Faster cleaning in case of recipe change
- No refilling: Dispensing, mixing and transporting in one container
- Highly flexible
- Low space requirement

### Additional Advantages of Speedy™ S/D

- Easy to change batch sizes
- Easy to change to sacks or drums

### Additional Advantages of Speedy™ D MT

- Low cleaning effort
- Stainless steel drum standard

### Technical Data

Sizes	Usable Volume	Batch Size
Speedy™	liters	kg
S 50	50 liters	LDPE mixing sack
S 100	100 liters	LDPE mixing sack
D 50	50 liters	Stainless steel drum
D 100	100 liters	Stainless steel drum
D 200	200 liters	Stainless steel drum

### Custom Solutions

Additional sizes and execution available on request.



Parameters

Bulk Density: 0.5 kg/l

Filling Level: 30-80 %

Get in Touch with Us!

# Individually Configurable

Sack and Drum Mixer Speedy™



## Mixing Sack

The MIXACO mixing sack (LDPE), which is 100 % free of dead space, ensures optimal mixing of the product. Using the mixing sack, the mix can easily be transported to the mixer and then transported onwards after the mixing process. The mixing sack can be used for another mixing process after it is discharged. The mixing sack is available in 50 or 100 liters.



## Mixing Sack Locator

The mixing sack locator is used to position the MIXACO mixing sack (LDPE) in the mixer. Based on the size of the mixing sack, two different versions are available (50 or 100 liters) which can be exchanged easily.



## Mixing Drum

As an alternative to the vacuum-fixed mixing sack, a stainless steel drum can also be used as mixing vessel. The mixing drum is available in versions of 50 or 100 liters.

## Visualization

The mixing systems can be visually represented in the control. Customized requirements are available here.

**MIXACO** MASCHINENBAU **Overview drum mixer** 2/20/2024 12:53:43

Control voltage OK	Mixer 1 FI
Breaker OK	Chopper 1 FI
Two hand OK	
Button lift up	Lift up
Button lift down	Lift down
Button app. Lift	Vacuumpump
FI mixer 1 OK	Air flushing M1
FI chopper 1 OK	Air flushing C1
Drum locking	
Mixinghead locking	
Cleaning board locking	

**Fault**

0 Rpm  
0.0 A  
C1:  
0 Rpm  
0.0 A

Suction  
Injection

0.0 A

32.0 °F

Home | Overview | Mode | Faults

**MIXACO** MASCHINENBAU

Industrial Mixers from the Innovation Leader

[Request a Quote](#)

[www.mixaco.com](http://www.mixaco.com)